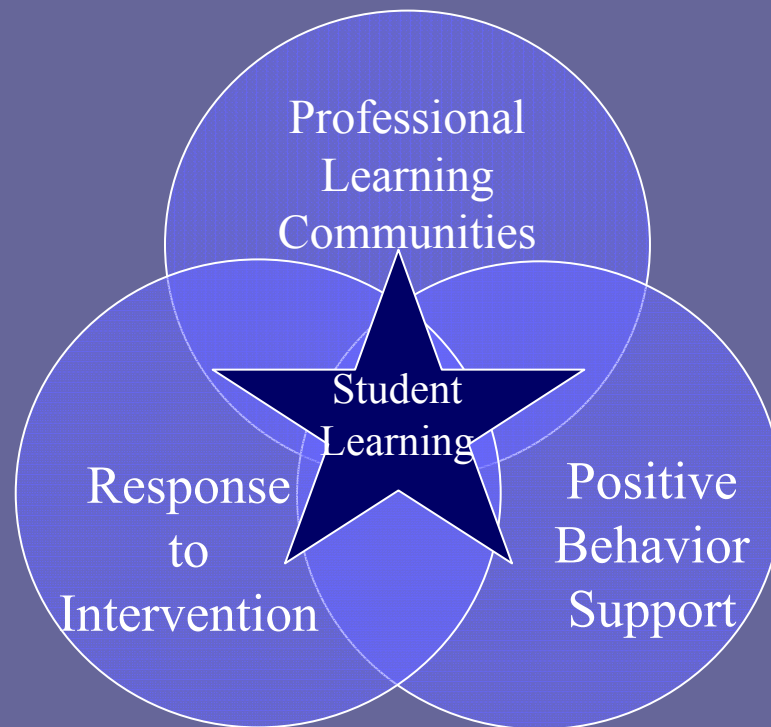


Laurel Elementary School



Demographics

- ▶ Enrollment = 522 students
- ▶ Ethnicity
 - ▶ Other = < 1%
 - ▶ Black = 1%
 - ▶ AI/AN = 1%
 - ▶ Asian = 1%
 - ▶ Hispanic = 12%
 - ▶ White = 85%
- ▶ English Language Learners (ELL) = 8%
- ▶ Special Education = 16%
- ▶ Talented and Gifted = 9%
- ▶ Free and Reduced Lunch = 59%
- ▶ Attendance Rate = 94%



Student Assessment

▶ OAKS

▶ Grade 3

▶ Reading 71%

▶ Math 73%

▶ Grade 4

▶ Reading 84%

▶ Math 80%

▶ Writing 33%

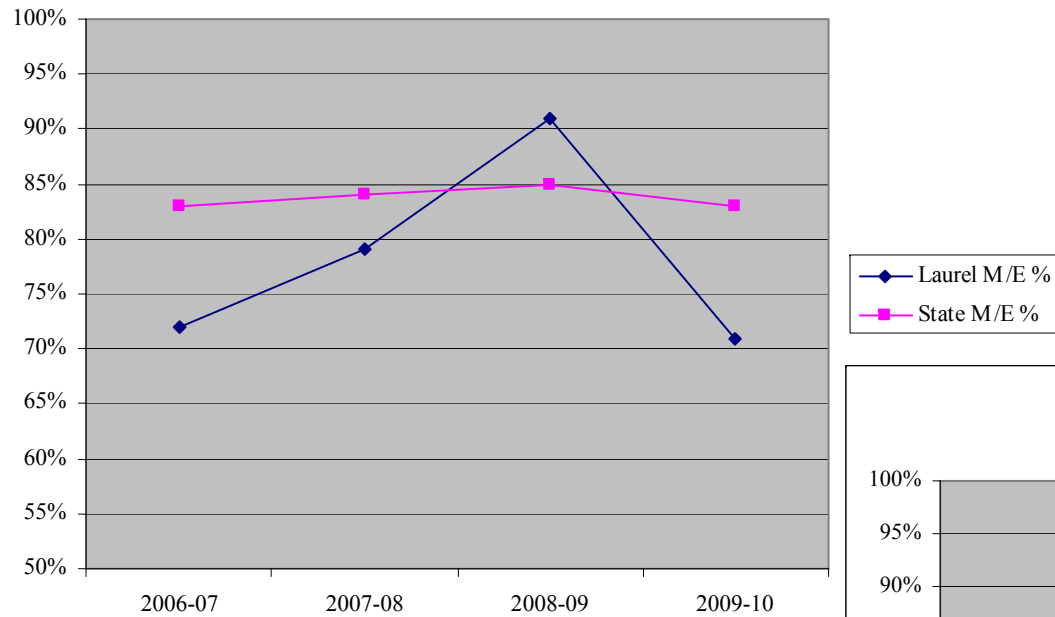


Student Assessment

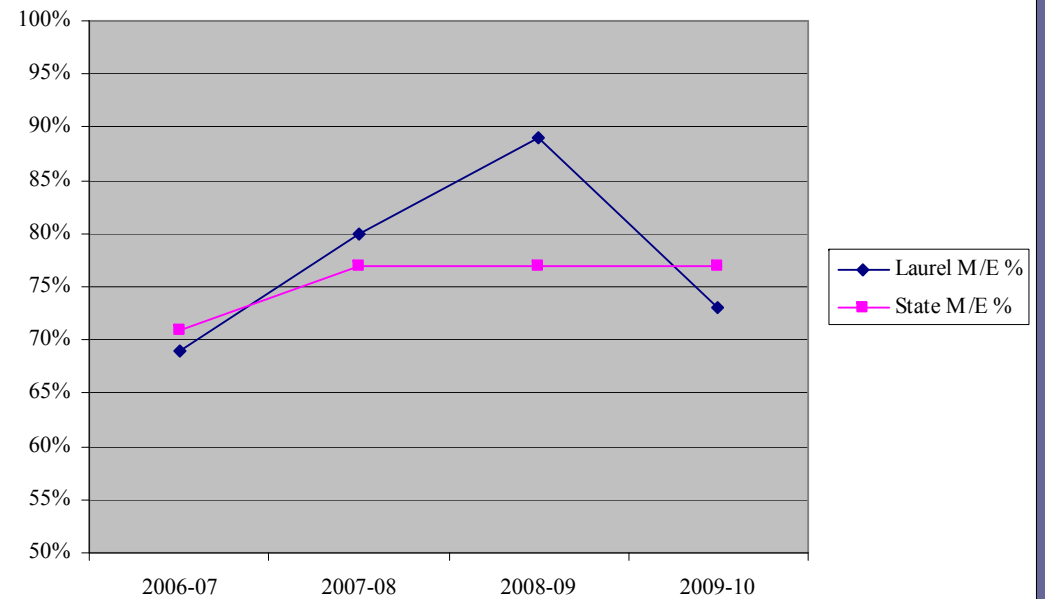
▶ OAKS: Grade 3



Grade 3 Reading 2006-2009



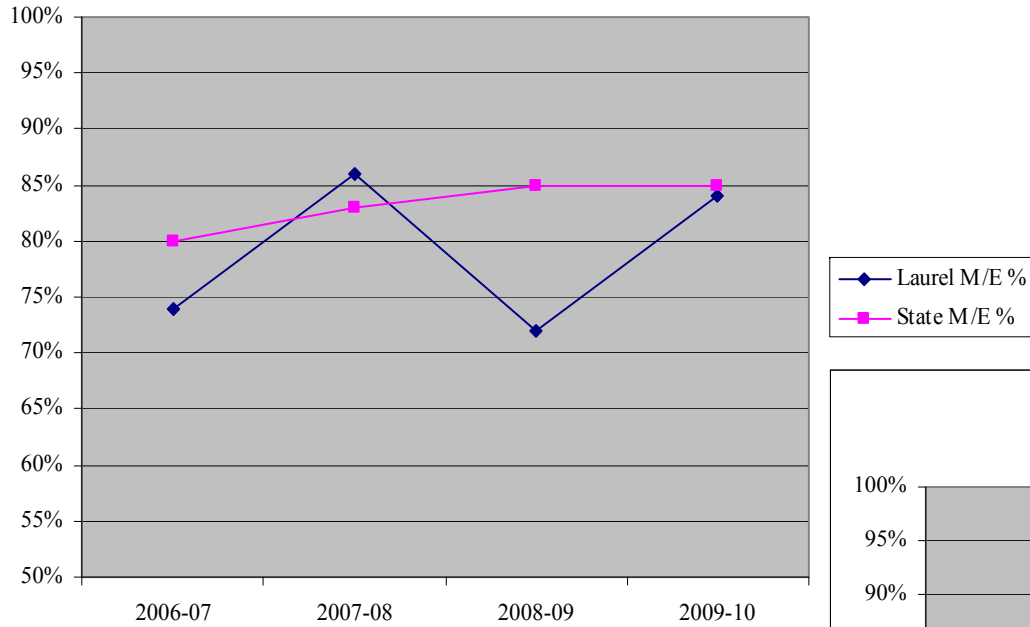
Grade 3 Math 2006-2009



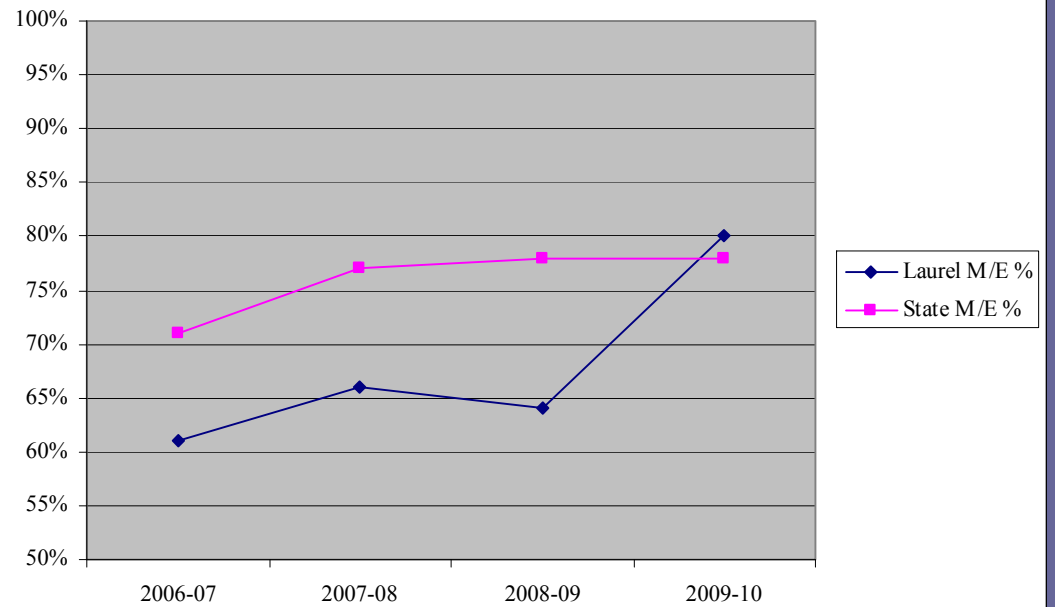
Student Assessment

► OAKS: Grade 4

Grade 4 Reading 2006-2009



Grade 4 Math 2006-2009

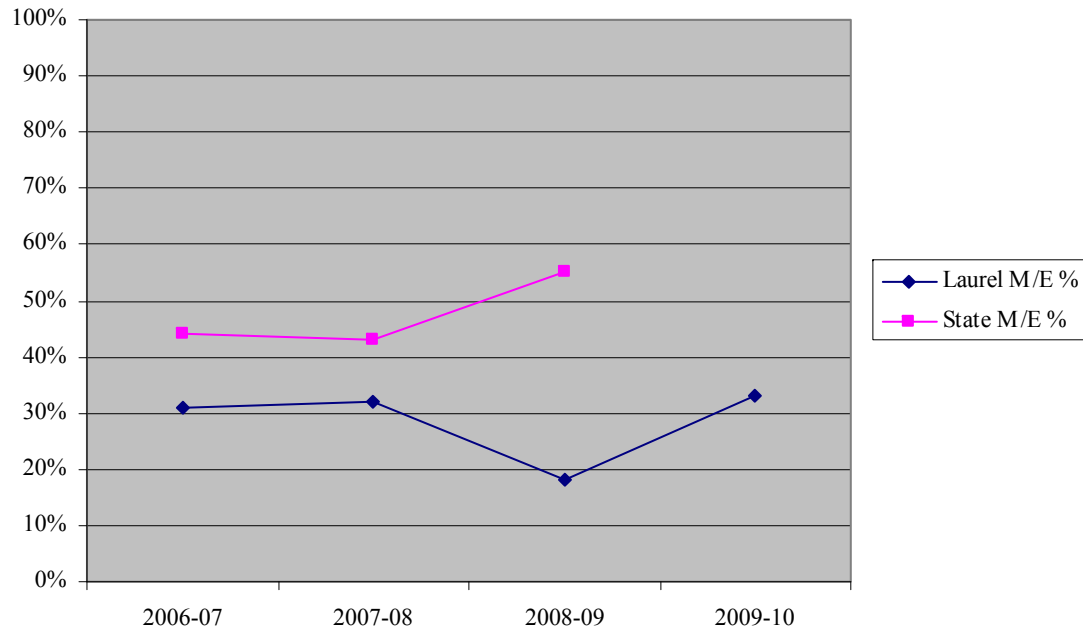


Student Assessment

► OAKS: Grade 4



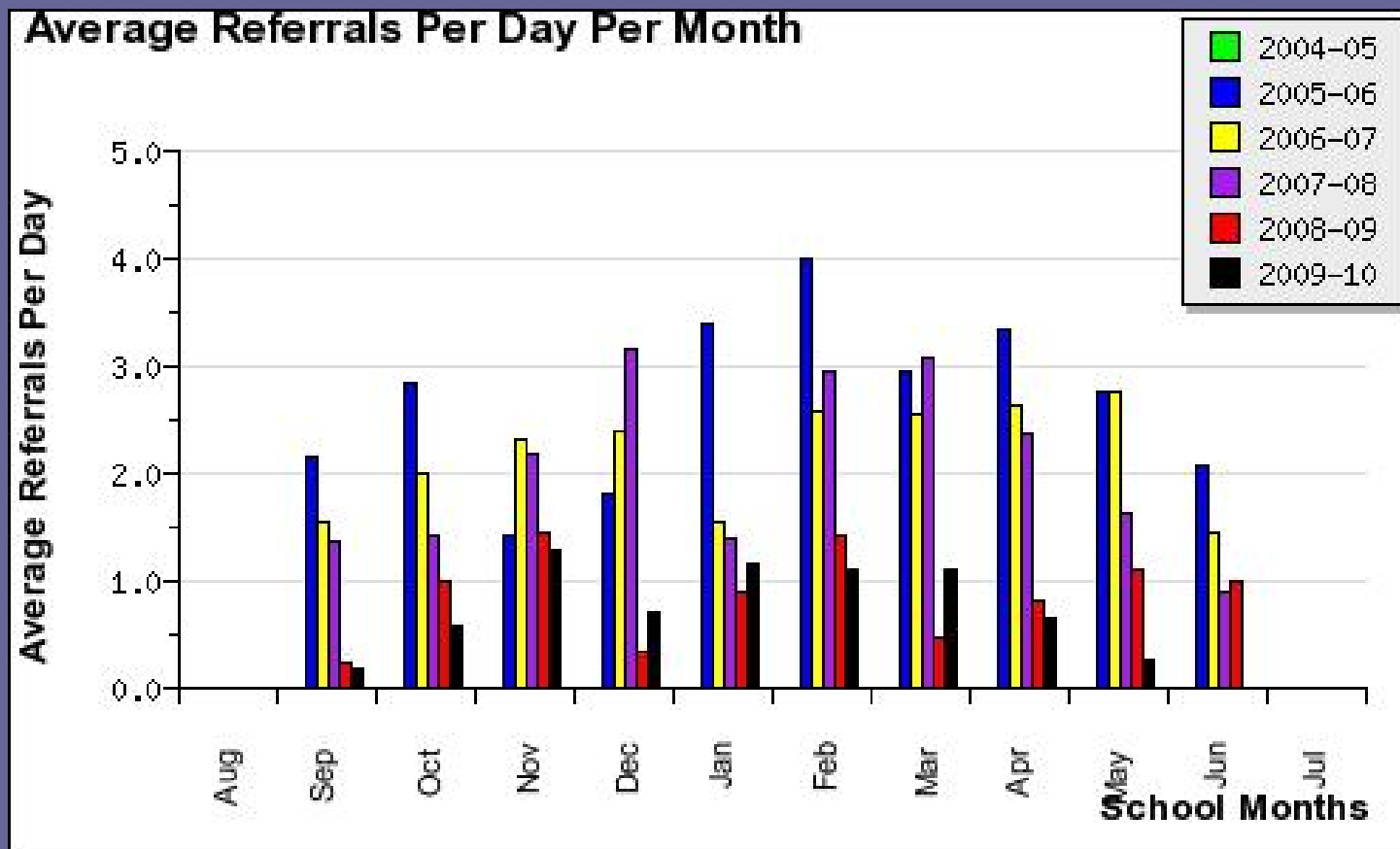
Grade 4 Writing 2006-2009



Student Behavior

► SWIS Information

- 121 total referrals for September-May of this year and last--
-exactly!



Response to Intervention

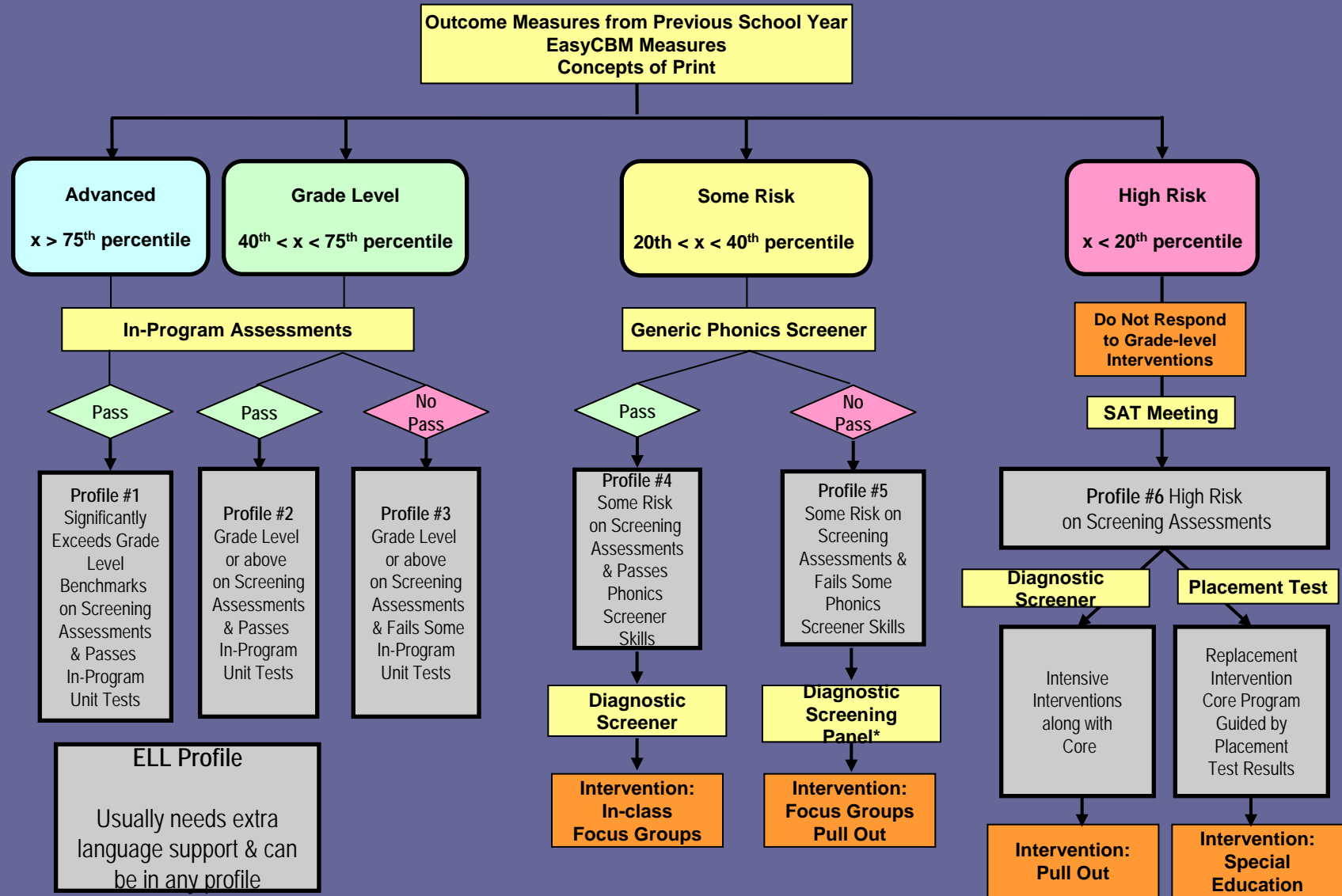
- ▶ School-wide assessments for all kids three times yearly in reading and mathematics
- ▶ Students found to be at some- or high- risk receive further diagnostic testing to determine intervention
- ▶ Interventions can be in the classroom, Focus Group, and/or in small group in Room 13
- ▶ Students receiving intervention have their progress monitored every two weeks to identify if the intervention is effective

Students Served

Kinders	22
1 st Graders	22
2 nd Graders	21
3 rd Graders	28
4 th Graders	14
Total	107



Response to Intervention Review Committee



Laurel 2010-11

► Schedule

- 90 minutes Reading daily
- 60 minutes Mathematics daily
- 4 Specialist classes per week
- Instructional Assistants will primarily support K, 1st and 2nd reading blocks

► Grade Level

- Collaboration 60 minutes weekly
- Focus Group interventions
- Monthly SAT consultation



Staffing

2009-10

Grade	Students
K (am/pm)	47
K (am/pm)	49
1	26
1	26
1	27
1	27
2	26
2	26
2	26
2	26
3	33
3	33
3	34
4	28
4	28
4	30
4	30

2010-11

Grade	Students
K (am/pm)	50
K (am/pm)	50
1	24
1	24
1	24
1	24
2	26
2	26
2	27
2	27
3	26
3	26
3	26
3	26
4	33
4	33
4	34